

# QuickStart Guide

## for Emona TutorTIMS-Professor Version

TTP-QSG-2.0

EMONA INSTRUMENTS PTY LTD

web: [www.tims.com.au](http://www.tims.com.au)

email: [info@tims.com.au](mailto:info@tims.com.au)

© 2005 Emona Instruments Pty Ltd. Printed in Australia

### START HERE

It is strongly recommended that you follow these step-by-step numbered instructions to set up and quickly begin using TutorTIMS-Professor

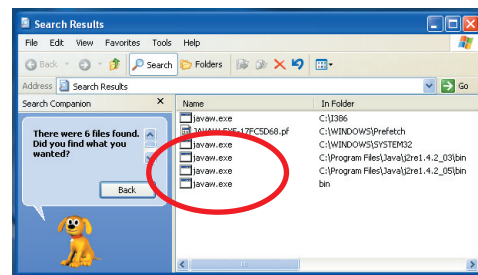
#### 1 CHECK THAT JAVA IS INSTALLED ON YOUR PC

If you are not sure that JAVA is already installed, perform a search for the "javaw.exe" program file on your PC's HDD.

Click START > SEARCH and enter "javaw.exe" to search.

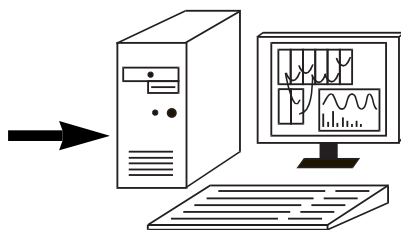
Proceed to STEP 3 if JAVA Runtime Environment is installed. (Version 1.4 or later).

Otherwise go to STEP 2 to install JAVA from the TutorTIMS-Professor CD-ROM.

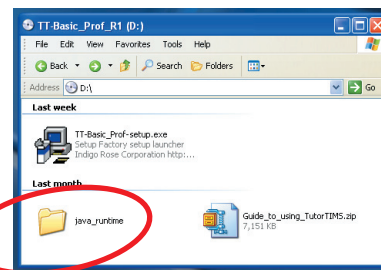


#### 2 INSTALL JAVA ON YOUR COMPUTER

Install JAVA from the TutorTIMS-Professor CD-ROM



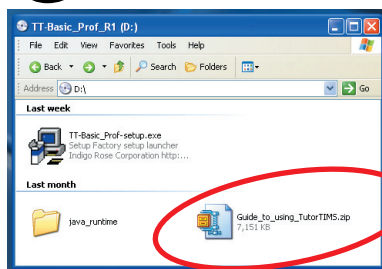
Take the TutorTIMS-Professor CD-ROM and insert in your computer's CD drive.



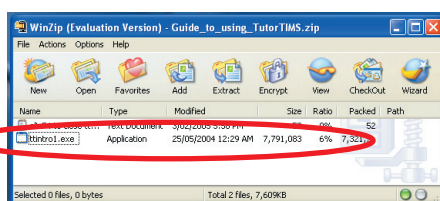
Open the TutorTIMS-Professor CD directory. Double click the JAVA folder and run the "jre...exe" application.

#### 3 VIEW THE TutorTIMS GUIDE - it only takes 4 minutes !

The GUIDE quickly shows how to make experiments, select and adjust modules, patch inputs and outputs, load and save experiments, and GRAB screen captures of experiments.



Open the TutorTIMS-Professor CD directory. Double click "Guide\_to\_using\_TutorTIMS.ZIP"



Double click "tintro...exe" file.



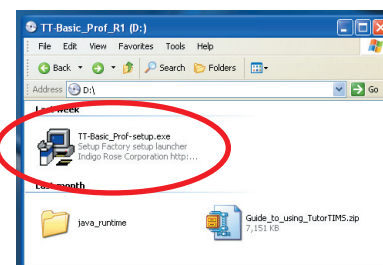
Sit back and view the self-running Guide. Press ALT F4 to quit.

#### 4 YOU ARE NOW READY TO INSTALL TutorTIMS-Professor Version

Open the TutorTIMS-Professor CD directory.

Double click "TT-...setup.exe" file.

Read and follow each step of the INSTALL procedure.



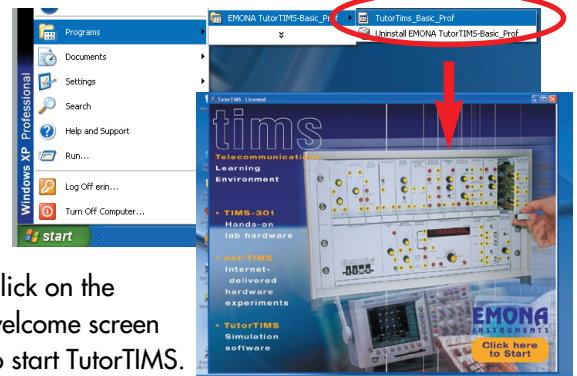
# 5 INSERT THE USB LICENSING KEY

To run TutorTIMS-Professor Version you must have the LICENSING KEY plugged into one of your PC's USB ports.

4 USB licensing keys are provided with TutorTIMS-Professor version, so 4 copies of TutorTIMS-Professor Version can be run simultaneously, or at 4 locations.

# 6 RUNNING TutorTIMS

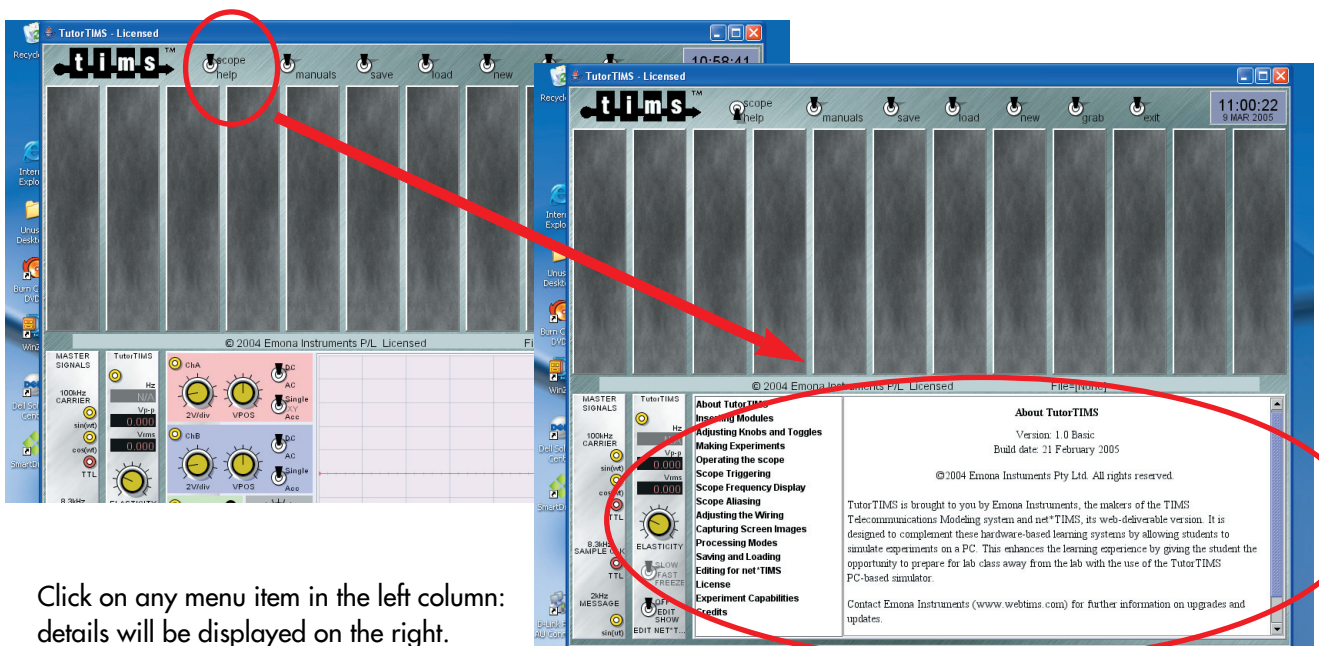
Go to START > PROGRAMS > .....



Click on the welcome screen to start TutorTIMS.

# 7 GETTING ON-SCREEN HELP

Click the HELP toggle switch: the help menu (left column) and details are displayed in the scope window.

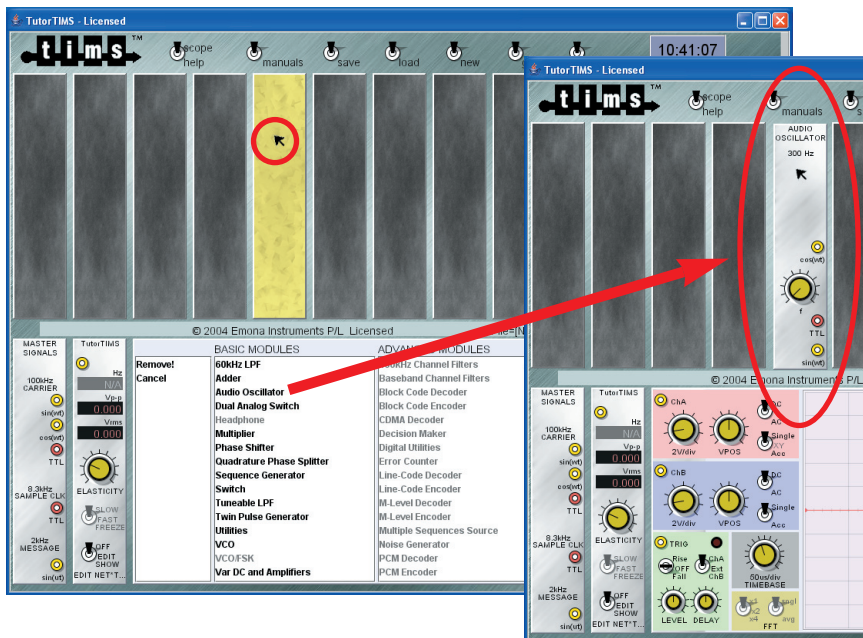


Click on any menu item in the left column: details will be displayed on the right.

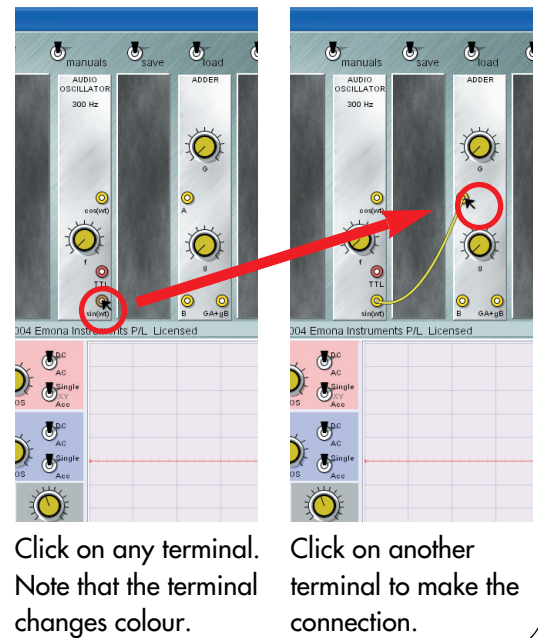
# 8 GETTING STARTED:

## • Selecting and inserting modules

RIGHT CLICK on any empty slot. Then click on the module of your choice.



## • Making connections

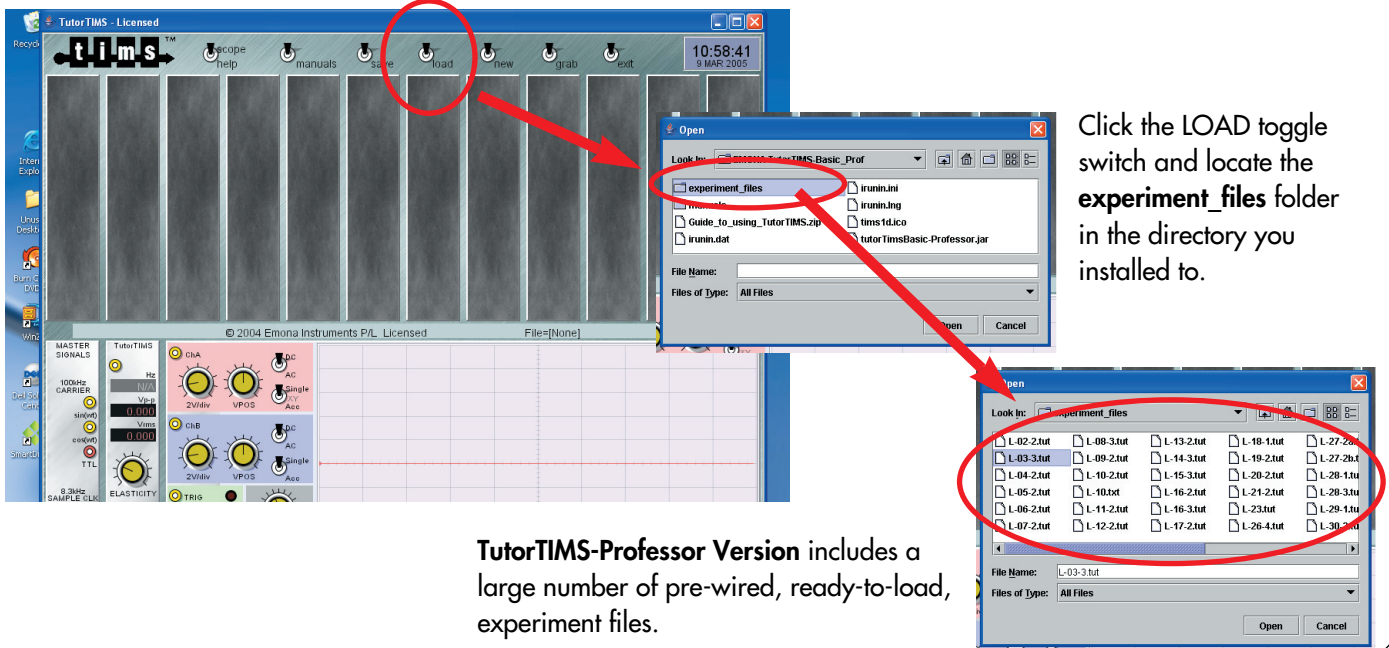


Click on any terminal. Note that the terminal changes colour.

Click on another terminal to make the connection.

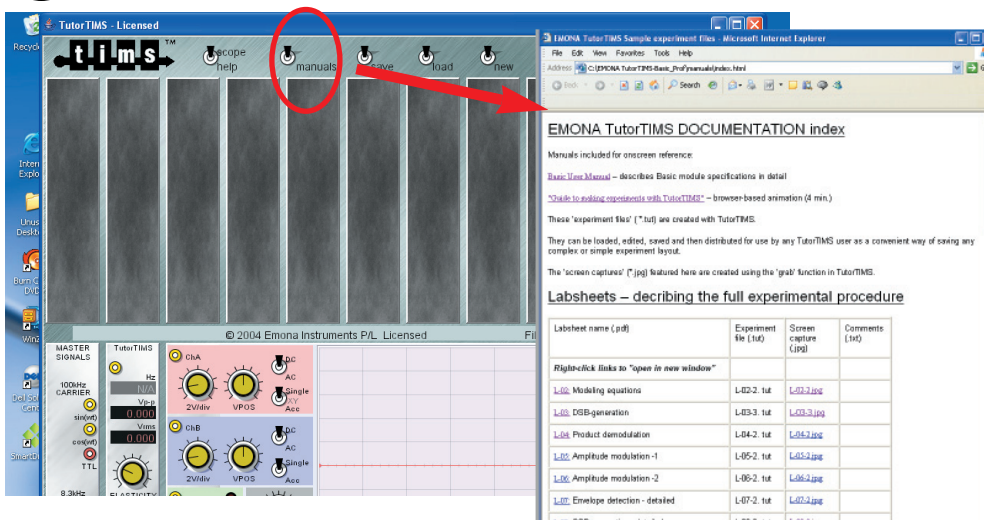
# 9 LOADING A TutorTIMS EXPERIMENT FILE

Click the LOAD toggle switch and locate the "\*.tut" file to load.



# 10 USER and EXPERIMENT MANUALS

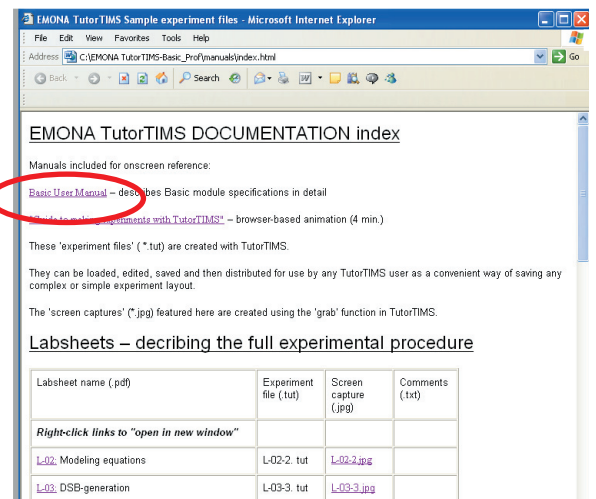
Click the MANUALS toggle switch to launch the documentation INDEX in a web browser window.



# 10-1 USER MANUALS

TIMS USER Manuals are provided in PDF format..

RIGHT CLICK your mouse button and select "Open in New Window" to open the manuals PDF file.



# 10-2 EXPERIMENT MANUALS and LOADABLE FILES

TIMS LabSheet Experiment Manuals are provided in PDF format.

- **LabSheet PDF files:**  
RIGHT CLICK your mouse button and select **"Open in New Window"** to open the experiment PDF file.

LabSheet name (.pdf)	Experiment file (.tut)	Screen capture (.jpg)	Comments (.txt)
<i>Right-click links to "open in new window"</i>			
<a href="#">L-02: Modeling equations</a>	<a href="#">L-02-2.tut</a>	<a href="#">L-02-2.jpg</a>	
<a href="#">L-03: DSB-generation</a>	<a href="#">L-03-3.tut</a>	<a href="#">L-03-3.jpg</a>	
<a href="#">L-04: Product demodulation</a>	<a href="#">L-04-2.tut</a>	<a href="#">L-04-2.jpg</a>	
<a href="#">L-05: Amplitude modulation -1</a>	<a href="#">L-05-2.tut</a>	<a href="#">L-05-2.jpg</a>	
<a href="#">L-06: Amplitude modulation -2</a>	<a href="#">L-06-2.tut</a>	<a href="#">L-06-2.jpg</a>	
<a href="#">L-07: Envelope detection - detailed</a>	<a href="#">L-07-2.tut</a>	<a href="#">L-07-2.jpg</a>	
<a href="#">L-08: SSB generation - detailed</a>	<a href="#">L-08-3.tut</a>	<a href="#">L-08-3.jpg</a>	
<a href="#">L-09: SSB demodulation</a>	<a href="#">L-09-2.tut</a>	<a href="#">L-09-2.jpg</a>	
<a href="#">L-10: ISB - independent sideband</a>	<a href="#">L-10-2.tut</a>	<a href="#">L-10-2.jpg</a>	<a href="#">L-10.txt</a>
<a href="#">L-11: Armstrong's phase modulator - detailed</a>	<a href="#">L-11-2.tut</a>	<a href="#">L-11-2.jpg</a>	
<a href="#">L-12: FM - generation by VCO - detailed</a>	<a href="#">L-12-2.tut</a>	<a href="#">L-12-2.jpg</a>	
<a href="#">L-13: FM - demodulation by PLL</a>	<a href="#">L-13-2.tut</a>	<a href="#">L-13-2.jpg</a>	
<a href="#">L-14: FM - demodulation by ZX counting - detailed</a>	<a href="#">L-14-3.tut</a>	<a href="#">L-14-3.jpg</a>	
<a href="#">L-15: Sampling - detailed</a>	<a href="#">L-15-3.tut</a>	<a href="#">L-15-3.jpg</a>	
<a href="#">L-16: PAM and TDM</a>	<a href="#">L-16-3.tut</a>	<a href="#">L-16-3.jpg</a>	

- **TutorTMS Experiment files:**  
Each experiment file includes the LabSheet number in its name.  
eg. **"L-02-2.tut"** is the experiment file for LabSheet "L-02".

These files are located in the **"experiment\_files"** directory.

- **Screen captures:**  
RIGHT CLICK your mouse button and select **"Open in New Window"** to see an image of the complete experiment on TutorTMS.

NOTE: these jpeg images are generated with the TutorTMS **GRAB** toggle switch.

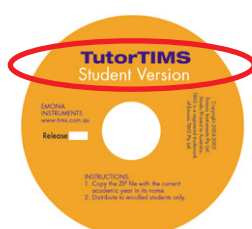
- **text "\*.txt" files:**  
Text files provide additional experiment set-up information.

## 11 SUPPORT and FEEDBACK

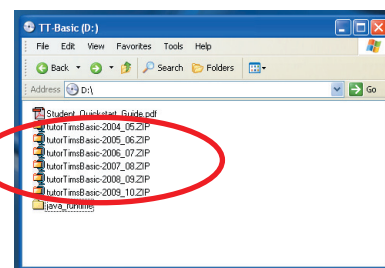
Whenever you have any questions concerning TIMS hardware or software experiments or applications, please do not hesitate to contact us via email at: **info@tims.com.au**

## How to distribute TutorTMS-Student Version

Only **TutorTMS-Student** Version may be distributed to students.



Take the **TutorTMS-Student** CD-ROM and insert in your computer's CD drive.



Open the **TutorTMS-Student** CD directory. Identify the **"\*.ZIP"** file with the current year in its name and distribute it only to students enrolled in your campus.